

UNO SUITE – TYPE A (1 Bedroom)

51 sqm / 549 sqft

#07-03 - #17-03
 #19-03 - #22-03
 #07-06 - #17-06
 #19-06 - #22-06

Living/Dining:

- CH: 2900
- DM(L x W): 5200 x 3000

Kitchen:

- CH: 2400
- DM(L x W): 3660 x 2100

Master Bedrm:

- CH: 2900
- DM(L x W): 3905 x 2905

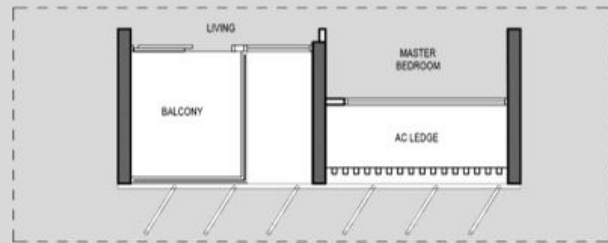
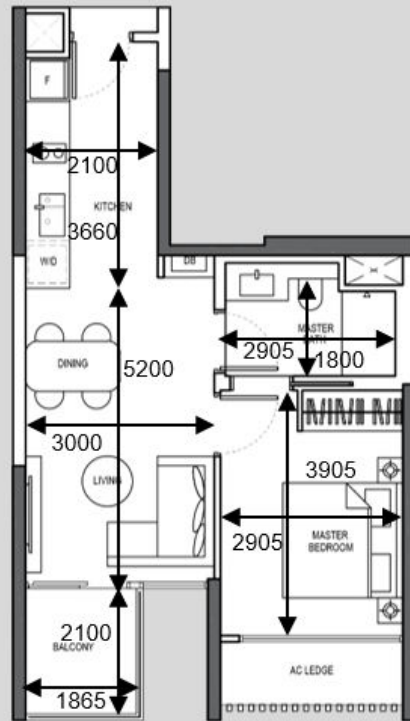
Master Bath:

- CH: 2425
- DM(L x W): 2905 x 1800

Balcony:

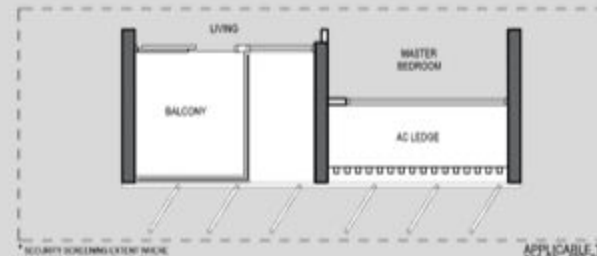
- CH: 2900
- DM(L x W): 2100 x 1865

All areas and dimensions are approximate only



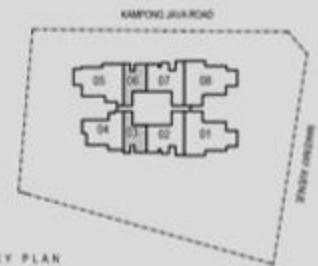
*SECURITY SCREENING EXTENT NEEDED
 REQUIRED BY RELEVANT AUTHORITIES

APPLICABLE TO
 #19-03 - #22-03



*SECURITY SCREENING EXTENT NEEDED
 REQUIRED BY RELEVANT AUTHORITIES

APPLICABLE TO
 #19-03 - #22-03



KEY PLAN

DUO SUITE – TYPE B1 (2 Bedroom)

81 sqm/ 872 sqft

#07-02 - #17-02

#19-02 - #22-02

#07-07 - #17-07

Living/Dining:

- CH: 2900
- DM(L x W): 4000 x 4430

Kitchen:

- CH: 2400
- DM(L x W): 3080 x 2930

Master Bedrm:

- CH: 2900
- DM(L x W): 2900 x 4065

Master Bath:

- CH: 2425
- DM(L x W): 2700 x 1700

Bedroom 2:

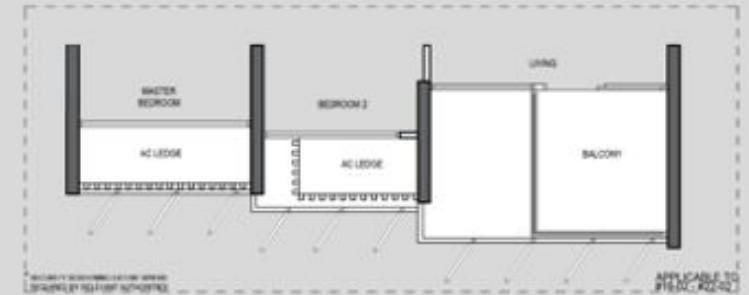
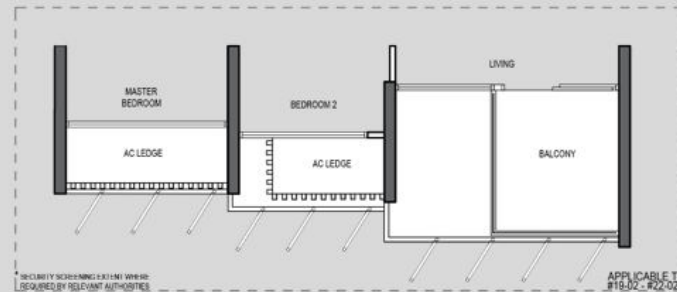
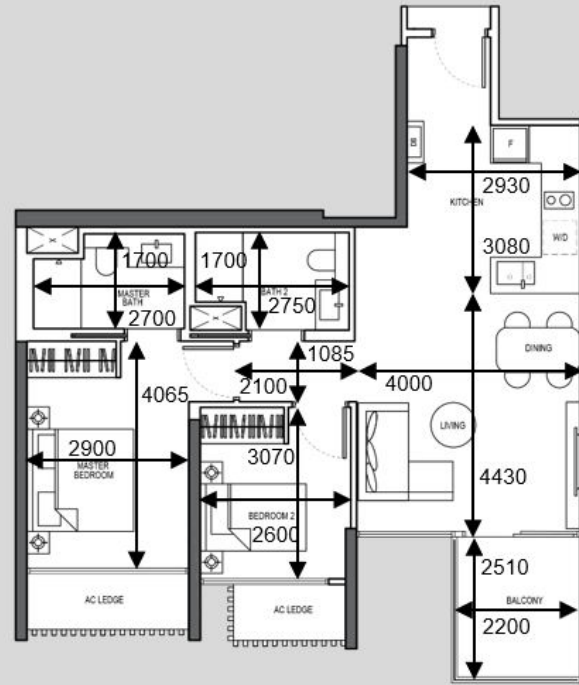
- CH: 2900
- DM(L x W): 2600 x 3070

Bath 2:

- CH: 2425
- DM(L x W): 2750 x 1750

Balcony:

- CH: 2900
- DM(L x W): 2510 x 2200



DUO SUITE – TYPE B2 (2 Bedroom)

82 sqm/ 883 sqft

#19-07 - #22-07

All areas and d
approximate or

Living/Dining:

- CH: 2900
- DM(L x W): 4260 x 4000

Kitchen:

- CH: 2400
- DM(L x W): 3100 x 3010

Master Bedrm:

- CH: 2900
- DM(L x W): 4065 x 2900

Master Bath:

- CH: 2400
- DM(L x W): 2700 x 1700

Bedroom 2:

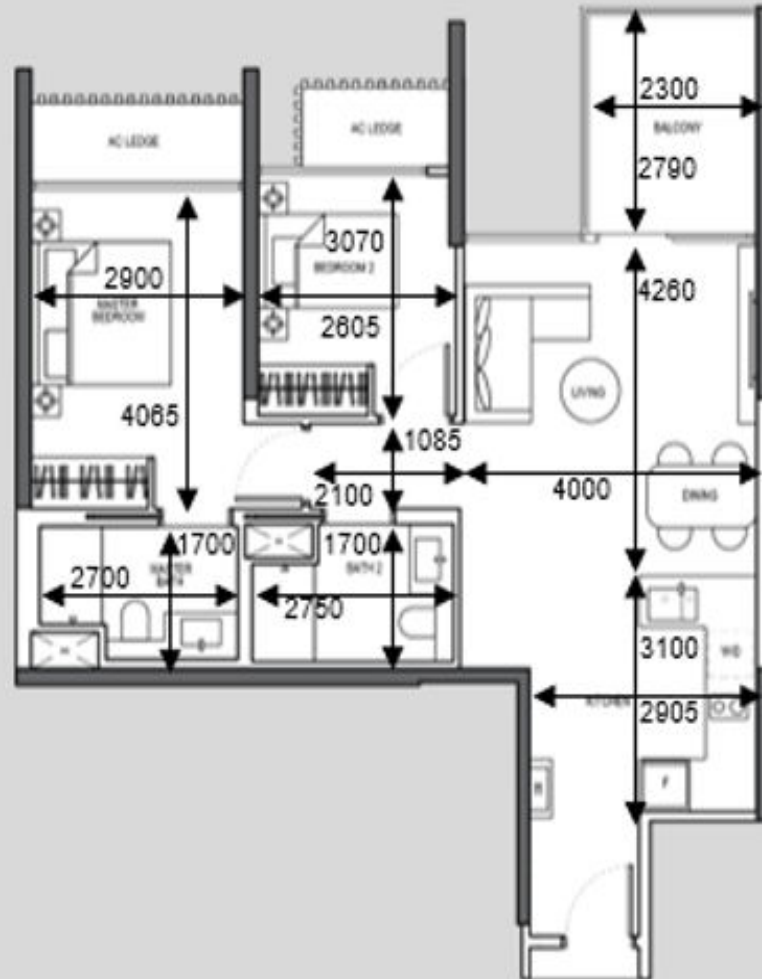
- CH: 2900
- DM(L x W): 3070 x 2605

Bath 2:

- CH: 2400
- DM(L x W): 2750 x 1700

Balcony:

- CH: 2900
- DM(L x W): 2300 x 2790



DUO SUITE – TYPE B3 (2 Bedroom)

85 sqm/ 915 sqft

#07-04 - #17-04

#19-04 - #22-04

Living/Dining:

- CH: 2900
- DM(L x W): 5275 x 3640

Kitchen:

- CH: 2400
- DM(L x W): 3640 x 2350

Master Bedrm:

- CH: 2900
- DM(L x W): 4735 x 2800

Master Bath:

- CH: 2400
- DM(L x W): 2700 x 1700

Bedroom 2:

- CH: 2900
- DM(L x W): 3550 x 2700

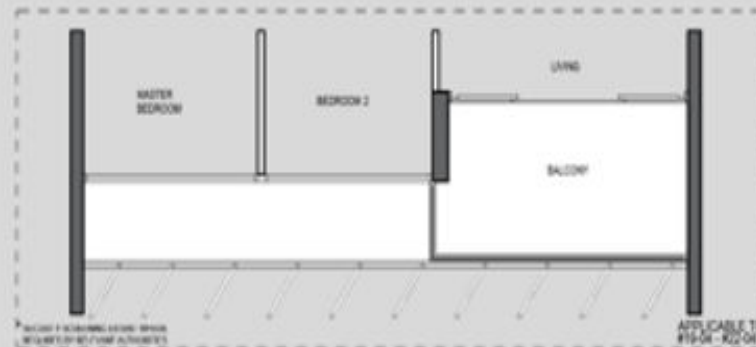
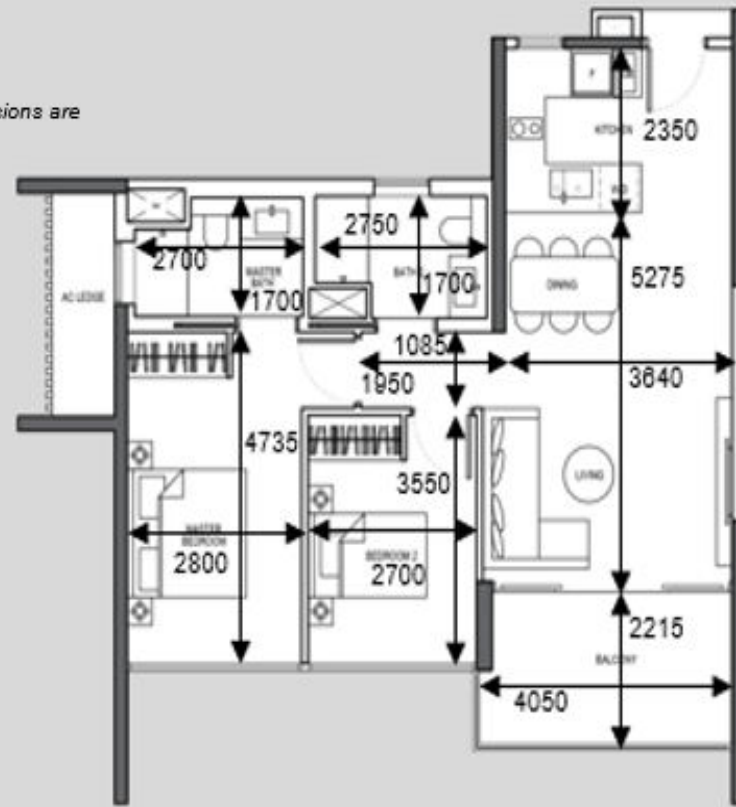
Bath 2:

- CH: 2400
- DM(L x W): 2750 x 1700

Balcony:

- CH: 2900
- DM(L x W): 4050 x 2215

All areas and dimensions are approximate only



APPLICABLE TO #15-04 - #22-04



APPLICABLE TO #15-04 - #22-04

TRES SUITE – TYPE C1 (3 Bedroom)

109sqm/ 1173 sqft

#07-05 - #17-05

Living/Dining:

- CH: 2900
- DM(L x W): 5500 x 3600

Kitchen:

- CH: 2400
- DM(L x W): 3600 x 2450

Master Bedrm:

- CH: 2900
- DM(L x W): 5250 x 2800

Master Bath:

- CH: 2400
- DM(L x W): 2700 x 1600

Bedroom 3:

- CH: 2900
- DM(L x W): 3370 x 2700

Utility:

- CH: 2900
- DM(L x W): 2000 x 1900

All areas and dimensions are approximate only

Corridor Main:

- CH: 2400
- DM(L x W): 2700 x 1450

Corridor Rooms:

- CH: 2400
- DM(L x W): 2900 x 1085

Balcony:

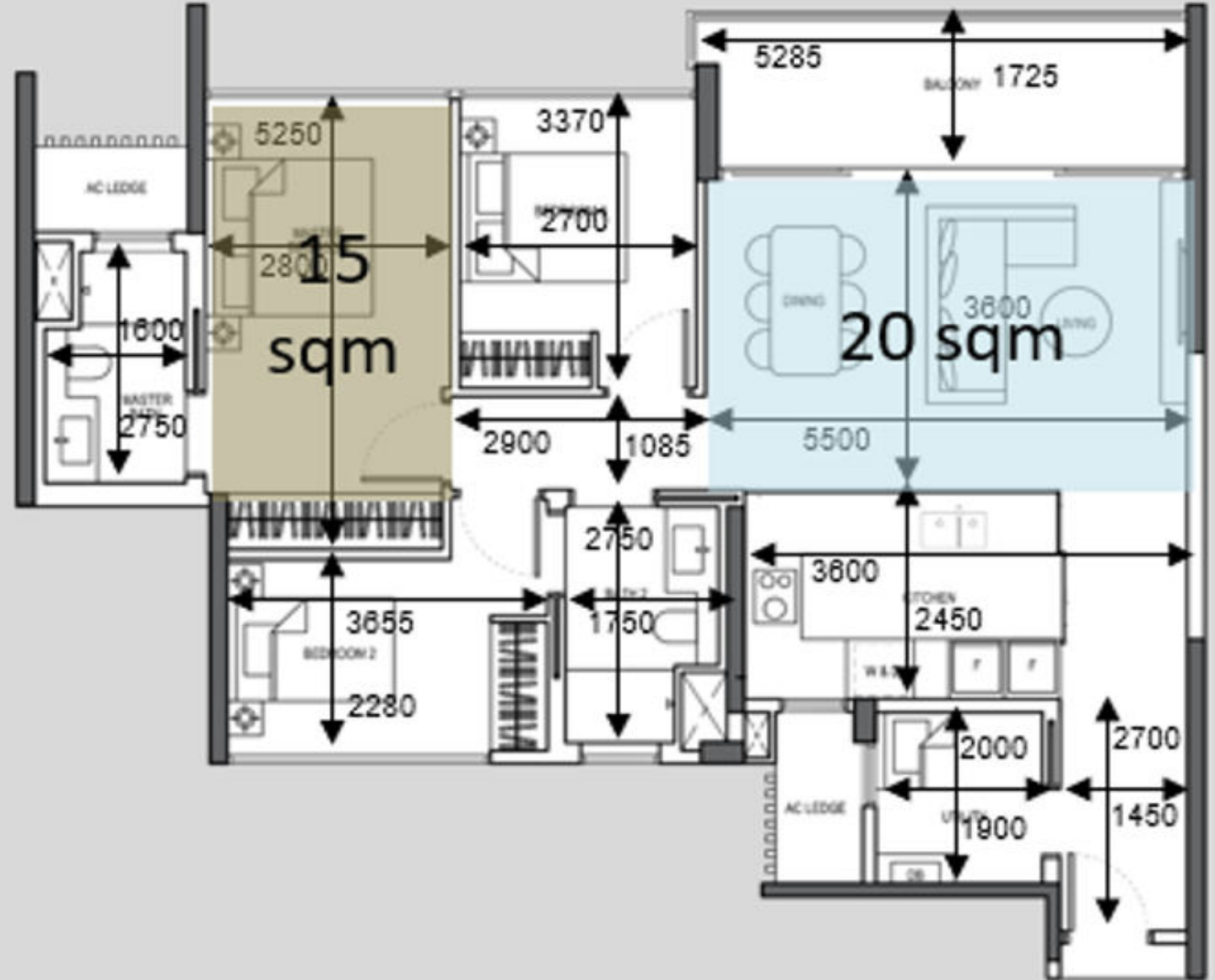
- CH: 2900
- DM(L x W): 5285 x 1725

Bedroom 2:

- CH: 2900
- DM(L x W): 3655 x 2280

Bath 2:

- CH: 2400
- DM(L x W): 2750 x 1750



TRES SUITE – TYPE C2 (3 Bedroom)

110sqm/ 1184 sqft

#19-05 - #22-05

Living/Dining:

- CH: 2900
- DM(L x W): 5500 x 3600

Kitchen:

- CH: 2400
- DM(L x W): 3600 x 2450

Master Bedrm:

- CH: 2900
- DM(L x W): 5250 x 2800

Master Bath:

- CH: 2400
- DM(L x W): 2700 x 1600

Bedroom 3:

- CH: 2900
- DM(L x W): 3370 x 2700

Utility:

- CH: 2900
- DM(L x W): 2000 x 1900

Corridor Main:

- CH: 2400
- DM(L x W): 5150 x 1450

Corridor Rooms:

- CH: 2400
- DM(L x W): 2900 x 1085

Balcony:

- CH: 2900
- DM(L x W): 5350 x 2180

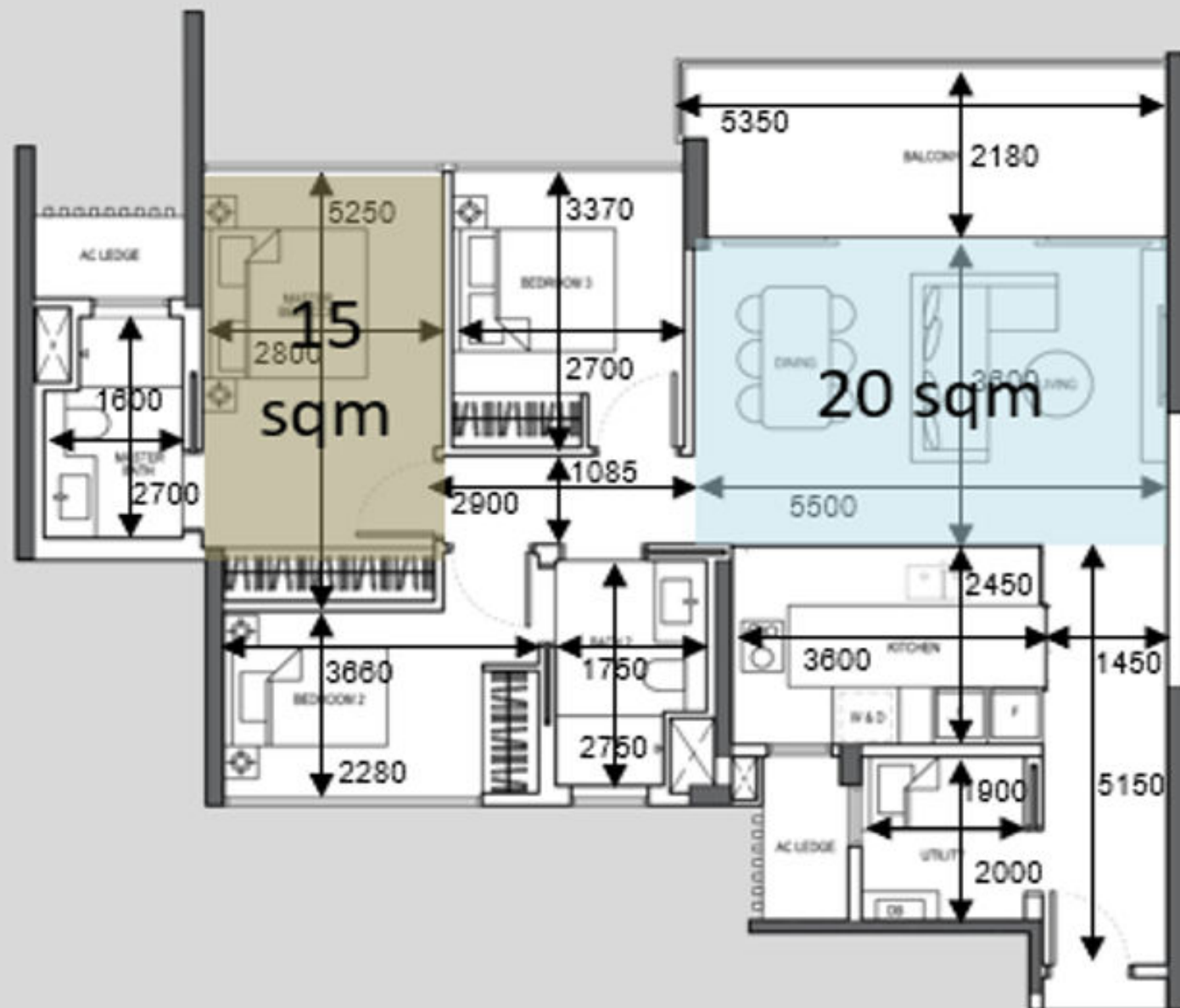
Bedroom 2:

- CH: 2900
- DM(L x W): 3660 x 2280

Bath 2:

- CH: 2400
- DM(L x W): 2750 x 1750

All areas and dimensions are approximate only



TRES DELUXE – TYPE C3 (3 Bedroom)

119sqm/ 1281 saft

#07-01 - #17-01

#07-08 - #17-08

Living/Dining:

- CH: 2900
- DM(L x W): 5500 x 3705

Kitchen:

- CH: 2400
- DM(L x W): 5030 x 2575

Master Bedrm:

- CH: 2900
- DM(L x W): 5300 x 2800

Master Bath:

- CH: 2425
- DM(L x W): 2500 x 2450

Bedroom 3:

- CH: 2900
- DM(L x W): 3420 x 2700

Powder rm:

- CH: 2425
- DM(L x W): 1950 x 1400

Utility:

- CH: 2900
- DM(L x W): 1900 x 170

Corridor:

- CH: 2400
- DM(L x W): 2900 x 1085

Balcony:

- CH: 2900
- DM(L x W): 5350 x 216

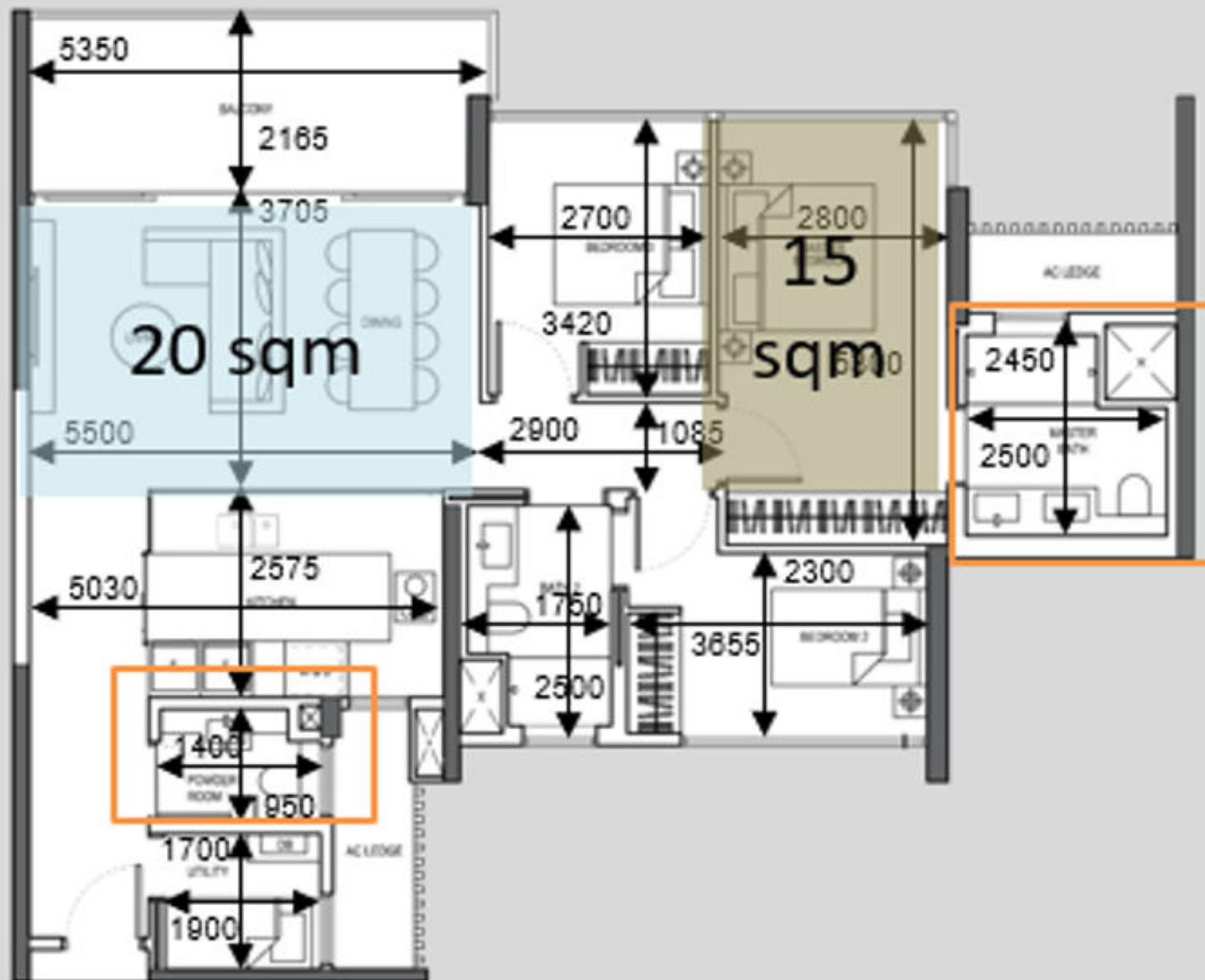
Bedroom 2:

- CH: 2900
- DM(L x W): 3655 x 230

Bath 2:

- CH: 2425
- DM(L x W): 2500 x 175

All areas and dimensions are approximate only



QUAD SUITE – TYPE D1 (4 Bedroom)

139sqm/ 1496 saft

#19-01 - #22-01

Living/Dining:

- CH: 2900
- DM(L x W): 5500 x 3655

Kitchen:

- CH: 2400
- DM(L x W): 3600 x 2600

Master Bedrm:

- CH: 2900
- DM(L x W): 4820 x 2800

Master Bath:

- CH: 2400
- DM(L x W): 2500 x 2450

Bedroom 2:

- CH: 2900
- DM(L x W): 3400 x 2950

Bedroom 3:

- CH: 2900
- DM(L x W): 3660 x 3450

Bath 2:

- CH: 2400
- DM(L x W): 2750 x 1750

Powder rm:

- CH: 2400
- DM(L x W): 2000 x 1

Utility:

- CH: 2900
- DM(L x W): 1900 x 1

Corridor Main:

- CH: 2400
- DM(L x W): 5600 x 1

Corridor Rooms:

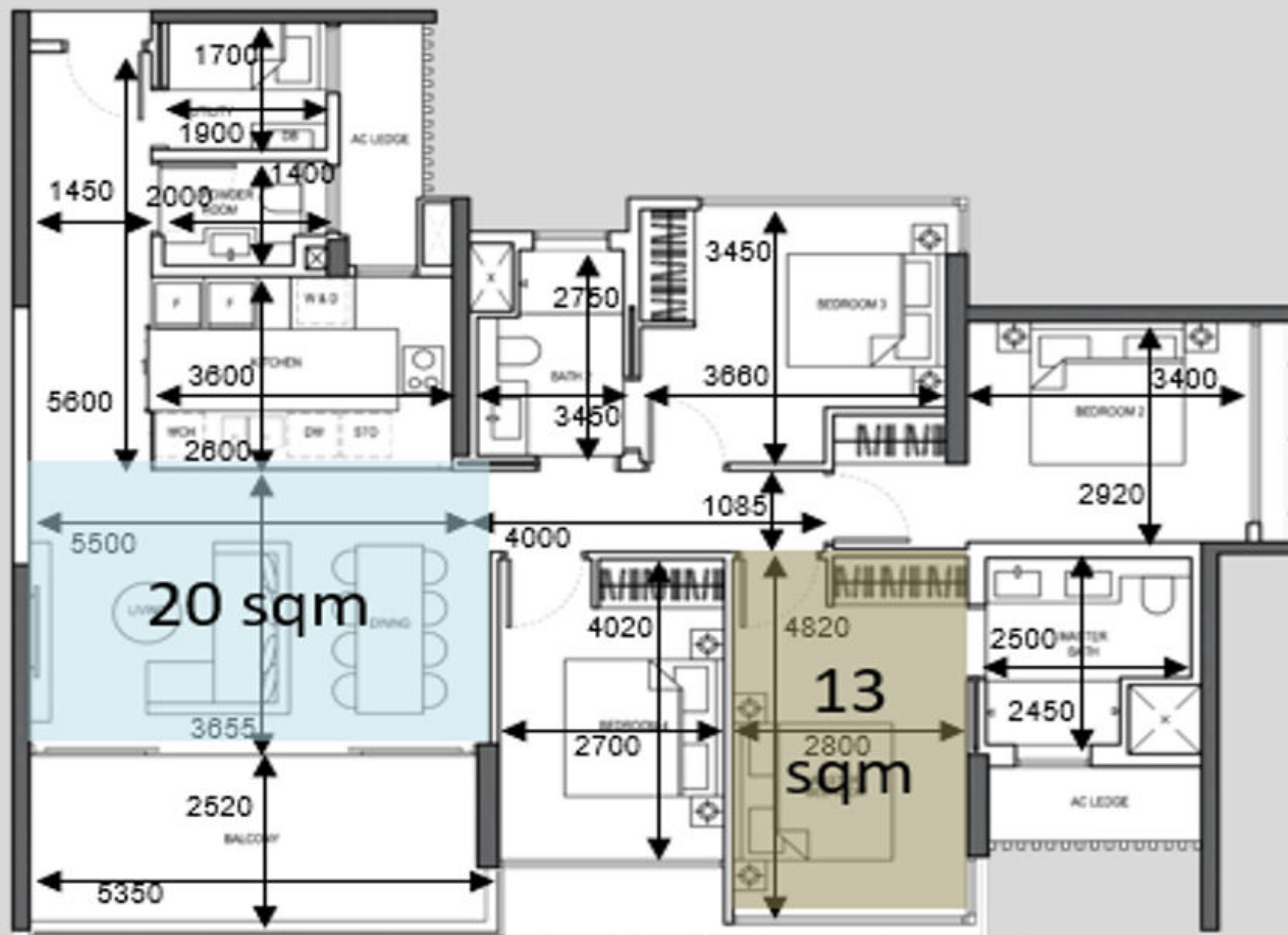
- CH: 2400
- DM(L x W): 4000 x 1

Balcony:

- CH: 2900
- DM(L x W): 2520 x 5

Bedroom 4:

- CH: 2900
- DM(L x W): 4020 x 2



All areas and dimensions are approximate only

* SECURITY SCREENING EXTENT WHERE REQUIRED BY RELEVANT AUTHORITIES

QUAD SUITE – TYPE D2 (4 Bedroom)

139sqm/ 1496 sqft

#19-08 - #22-08

Living/Dining:
 • CH: 2900
 • DM(L x W): 5500 x 3660

Kitchen:
 • CH: 2400
 • DM(L x W): 3600 x 2600

Master Bedrm:
 • CH: 2900
 • DM(L x W): 4820 x 2800

Master Bath:
 • CH: 2400
 • DM(L x W): 2500 x 2450

Bedroom 2:
 • CH: 2900
 • DM(L x W): 3450 x 2950

Bedroom 3:
 • CH: 2900
 • DM(L x W): 3660 x 3450

Bedroom 4:
 • CH: 2900
 • DM(L x W): 4020 x 2700

Powder rm:
 • CH: 2400
 • DM(L x W): 1650 x 1400

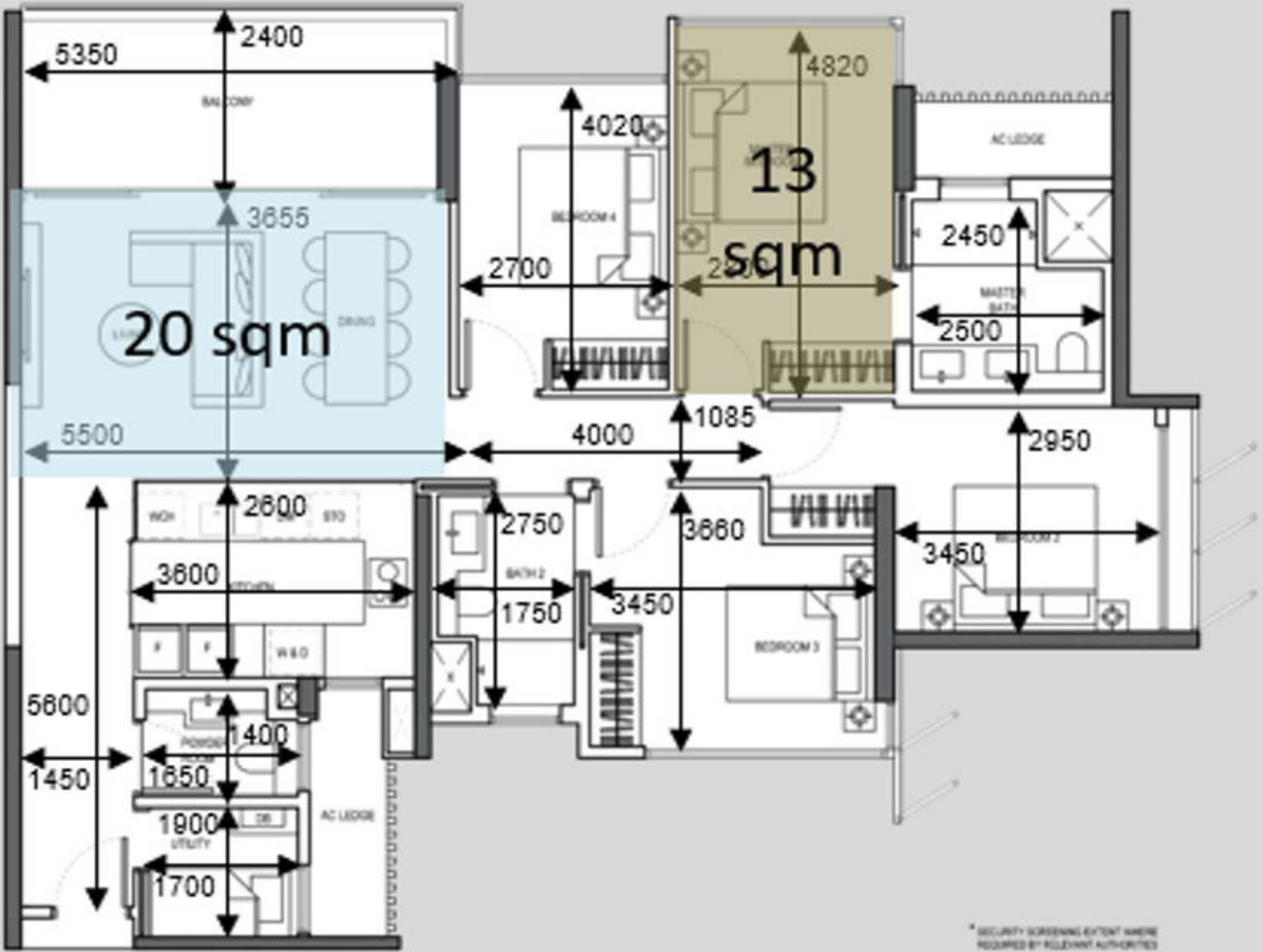
Utility:
 • CH: 2900
 • DM(L x W): 1900 x 1700

Corridor Main:
 • CH: 2400
 • DM(L x W): 5600 x 1450

Corridor Rooms:
 • CH: 2400
 • DM(L x W): 4000 x 1085

Balcony:
 • CH: 2900
 • DM(L x W): 5350 x 2400

Bath 2:
 • CH: 2400
 • DM(L x W): 2750 x 1750



All areas and dimensions are approximate only

* SECURITY SCREENING EXTENT WHERE REQUIRED BY RELEVANT AUTHORITIES